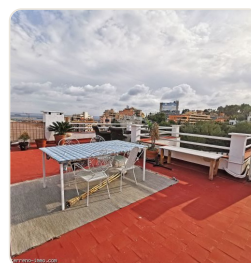
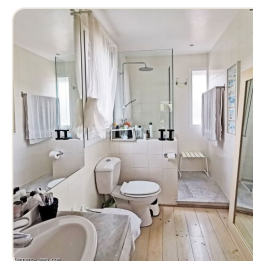
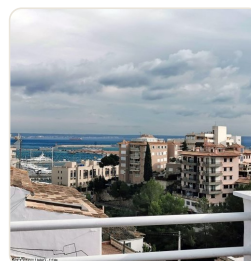


## Ref 1721; Authentic penthouse with sea views and large terrace in the El Terreno district for sale

Palma - El Terreno · Sold · Ref 1721



### DESCRIPTION

This charming penthouse apartment with 150m<sup>2</sup> of living space is located in a 3-party house in the beautiful upper part of Palma's El Terreno. Particularly impressive are the two quietly located terraces (about 160m<sup>2</sup> total) with south orientation and wonderful panoramic views of the sea and the park Bellver. The penthouse was renovated a few years ago while retaining the authentic style elements. Division: 4 bedrooms, 2 bathrooms (including 1 ensuite), kitchen, living room-dining room, private roof terrace with panoramic sea and nature, extra terrace A parking space in the underground garage and a cellar room can be purchased for 60,000 €.

### FACTS

<b>Region</b>	<b>Status</b>
Palma - El Terreno	Sold
<b>Living space</b>	<b>Property</b>
150 m <sup>2</sup>	314 m <sup>2</sup>
<b>Bedroom</b>	<b>Bathroom</b>
4	2
<b>Year of construction</b>	<b>Heating/cooling</b>
1929	D

### CONTACT US

e-mail: [info@el-terreno-immo.com](mailto:info@el-terreno-immo.com)

Telephone: 0034 971 284 026

Mobile / WhatsApp: 0034 637 128 058

Av. Joan Miró 82, 07015 Palma



Scan for more info