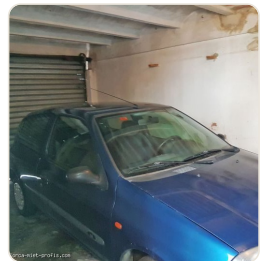
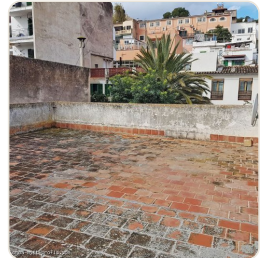


## Ref 1612; Investment! Villa with 3 apartments and garage in Palma El Terreno for sale

Palma - El Terreno · Sold · Ref 1612



### DESCRIPTION

This house from 1930 consists of 3 residential units and is located in a residential villa-residential location, in the beautiful district of El-Terreno in Palma de Mallorca, directly at the castle park Bellver. The building needs refurbishment. There are several expansion options, so the buyer can divide the house individually. A swimming pool would also be possible. Distribution: Ground floor: Apartment with living-bedroom, kitchen and bathroom, 36m2 1st floor: spacious apartment with veranda and patio, 145m2 2nd floor: another with 94m2 plus terrace Rooftop terrace with panoramic views Garage for 2 cars, 36m2

### FACTS

<b>Region</b>	<b>Status</b>
Palma - El Terreno	Sold
<b>Living space</b>	<b>Property</b>
373 m²	368 m²
<b>Bedroom</b>	<b>Bathroom</b>
6	5
<b>Year of construction</b>	<b>Heating/cooling</b>
1930	D

### CONTACT US

e-mail: [info@el-terreno-immo.com](mailto:info@el-terreno-immo.com)

Telephone: 0034 971 284 026

Mobile / WhatsApp: 0034 637 128 058

Av. Joan Miró 82, 07015 Palma



Scan for more info