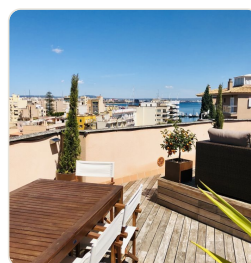
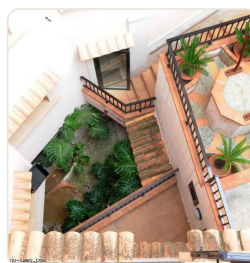
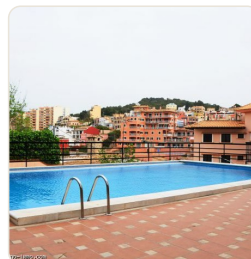
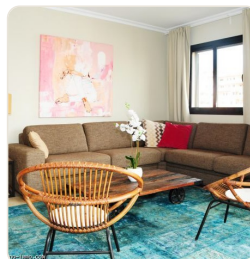


## Ref 1685; Penthouse with beautiful roof terrace and sea views in Bonanova for sale

Palma - Bonanova · Sold · Ref 1685



### DESCRIPTION

This beautiful penthouse is located in a very nice and well-kept condominium with large swimming pool between La Bonanova and El Terreno. The penthouse is generously cut and has next to the 3 balconies a large very cozy roof terrace with wooden floor, planting and automatic irrigation system. The penthouse has hot/cold air conditioning and electric radiators in the bathrooms. A covered car parking space and a storage room are included in the purchase price. Division: open plan large kitchen with living and dining room, 2 bedrooms, 2 bathrooms Living space:102 m2 plus 3 balconies 25m2 and roof terraces 55m2 Location: Bonanova is an exclusive and quiet district of Palma, adjacent to the forest of Bellver Castle and the well-known ...

### FACTS

<b>Region</b>	<b>Status</b>
Palma - Bonanova	Sold
<b>Living space</b>	<b>Property</b>
102 m²	182 m²
<b>Bedroom</b>	<b>Bathroom</b>
2	2
<b>Heating/cooling</b>	
D	

### CONTACT US

e-mail: [info@el-terreno-immo.com](mailto:info@el-terreno-immo.com)

Telephone: 0034 971 284 026

Mobile / WhatsApp: 0034 637 128 058

Av. Joan Miró 82, 07015 Palma



Scan for more info