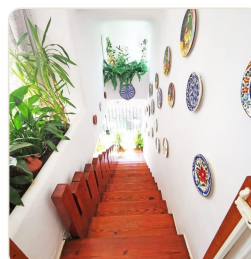
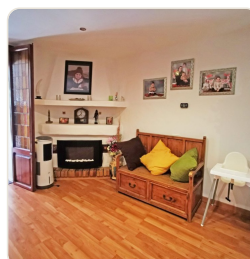


Ref 1825; Charming townhouse with terraces and 2 garages for sale in El Terreno, Palma

Palma - El Terreno · Sold · Ref 1825



DESCRIPTION

The townhouse is located in Palma's trendy bohemian district El Terreno, within walking distance of the beautiful Park Bellver with the castle and also to the Paseo Marítimo or the Santa Catalina district. The property has been designed in an exceptional Ibizenko style, which makes it very special. On a total of 269 m² of living space there are 4 bedrooms and 3 bathrooms (of which 2 bathrooms en suite), a living room with fireplace as well as dining room and kitchen. The outdoor area impresses with several well-kept terraces and barbecue area. In addition, there are 2 garages on the ground floor, which could be converted into additional living space. A super value for money for a house with ...

FACTS

Region	Status
Palma - El Terreno	Sold
Living space	Bedroom
269 m ²	4
Bathroom	Floors
3	2

CONTACT US

e-mail: info@el-terreno-immo.com

Telephone: 0034 971 284 026

Mobile / WhatsApp: 0034 637 128 058

Av. Joan Miró 82, 07015 Palma



Scan for more info