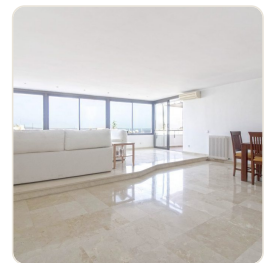


Ref 1982; Bright penthouse with stunning sea views for sale in El Terreno

Palma - El Terreno · Sold · Ref 1982



DESCRIPTION

This bright penthouse is located in an excellent location in El Terreno, Palma, not far from the hip Plaza Gomila. The building is very well maintained and has several elevators as well as underground parking. On a generous living area of 200 m² there are a total of 4 bedrooms, 2 bathrooms, the living and dining room, the kitchen and two beautiful spacious terraces (15m² and 25m²). Due to the perfect orientation, you can enjoy the sun and the light in the apartment all day long. The view extends from the sea and the harbour to the cathedral and the park with its Bellver Castle. The apartment is in very good condition, but can be significantly increased in value with ...

FACTS

Region	Status
Palma - El Terreno	Sold
Living space	Property
200 m ²	225 m ²
Bedroom	Bathroom
4	2
Year of construction	
1967	

CONTACT US

e-mail: info@el-terreno-immo.com

Telephone: 0034 971 284 026

Mobile / WhatsApp: 0034 637 128 058

Av. Joan Miró 82, 07015 Palma



Scan for more info