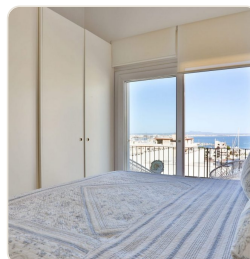


## Ref 2018; Duplex apartment with sea views, parking and private pool

Palma - El Terreno · Sold · Ref 2018



### DESCRIPTION

The apartment is located in the upper part of El Terreno, right next to Bellver Park. Entrance level: living and dining room, kitchen, 2 bedrooms, 2 bathrooms, 2 terraces with park views, cathedral and sea views and private pool Lower level: another bedroom with bathroom en suite, another room that can be used as a storage room, wine cellar, or another bedroom. City gas heating, hot and cold air conditioning, parking available.

### FACTS

Region	Status
Palma - El Terreno	Sold
Living space	Bedroom
118 m²	3
Bathroom	Floors
3	3
Year of construction	
1956	

### CONTACT US

e-mail: [info@el-terreno-immo.com](mailto:info@el-terreno-immo.com)

Telephone: 0034 971 284 026

Mobile / WhatsApp: 0034 637 128 058

Av. Joan Miró 82, 07015 Palma



Scan for more info